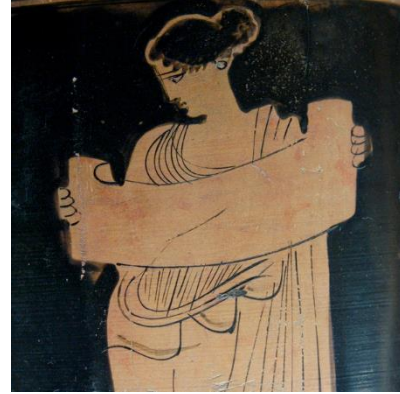


Greek 1000: Introductory Ancient Greek

2023-2024

Instructor: see OWL/Draft my Schedule
Course Location: see OWL/Draft my Schedule
Course Times: see OWL/Draft my Schedule
E-mail: see OWL
Office Hours: By appointment



Scene from an Attic lekythos, 435-425 BC
Paris, Louvre CA 2220 (Wikimedia Commons)

Course Description

This course offers students an introduction to the ancient Greek language. Emphasis is placed on acquiring the fundamentals of grammar, vocabulary, and syntax, with a view to teaching students to read and translate ancient Greek. Students will solidify their language skills and gain familiarity with reading ancient Greek firsthand. Through learning the language, students will also gain a more profound knowledge, and wider perspective, of ancient Greek society; language is a window to culture, and attention is given in class to looking through that window.

Textbook

Hardy Hansen and Gerald Quinn. *Greek: An Intensive Course*, 2nd edition (New York: Fordham University Press, 1992). (ISBN-13: 978-0823216642)

Course Delivery

This course will be taught in person, barring unforeseen circumstances. Our course OWL site will be used for posting homework assignments, supplementary material, and course announcements. Please use your UWO email address for personal communication with the instructor (and this is how I will contact you, too).

Course Objectives

By the end of this course, you will be well on your way toward reading and translating ancient Greek texts. You will gain an elementary knowledge of the grammar, syntax, and vocabulary of the language as we progress through the first half of our course textbook, in preparation for advanced ancient Greek study. The systematic study of Greek will also develop your understanding of English grammar. Moreover, in learning to read ancient Greek you will develop your critical thinking skills and intellectual ability; here, you will see how details come together to form a greater whole, wherein a small change really does make an iota of difference.

Evaluation

Learning any language requires regular practice. You must routinely review and reinforce what you have learned as you build a foundation for constantly-developing language skills. Ancient Greek is no exception, and part of your assessment is designed to support this aspect of your language acquisition. Weekly quizzes and assignments will give you the opportunity to engage with material (and solidify your learning) before we proceed to the next topic.

Because language learning requires active engagement, you are expected to be present and prepared for class every day. This means completing homework, discussing that work, and participating in class activities. Regular attendance and preparation will lead to success in mastering ancient Greek.

15%	Weekly quizzes every Tuesday (lowest 5 of the 20 quizzes will be dropped)
15%	Homework assignments (lowest 4 homework assignments will be dropped)
15%	Attendance, preparation, participation (graded every class; lowest 4 classes will be dropped)
15 %	In-class Test 1 (Nov. 9)
15 %	In-class Test 2 (Feb. 15)
25%	Final Exam (scheduled by Registrar)

Electronic Devices

Electronic devices will not be permitted for quizzes, tests, or exams. Assignments should reflect the student's own independent work.

Tentative Course Schedule

*Note: numbers listed refer to *sections* of Hansen and Quinn's text, *not* page numbers.

O-Week (Sept. 7): Introductions

Week 1 (Sept. 12 & 14): sections 1-8.

Week 2 (Sept. 19 & 21): Quiz 1. Sections 9-13.

Week 3 (Sept. 26 & 28): Quiz 2. Sections 14-17.

Week 4 (Oct. 3 & 5): Quiz 3. Unit One Vocabulary & section 18.

Week 5 (Oct. 10 & 12): Quiz 4. Sections 19-22.

Week 6 (Oct. 17 & 19): Quiz 5. Sections 23-27. Unit Two Vocabulary

Week 7 (Oct. 24 & 26): Quiz 6. Sections 28-30.

Week 8: (Oct 30 – Nov 3): Reading Week, no class

Week 9 (Nov. 7 & 9): Sections 31-32. **Test 1: November 9th.**

Week 10 (Nov. 14 & 16): Quiz 7. Sections 33-36. Unit Three Vocabulary.

Week 11 (Nov. 21 & 23): Quiz 8. Sections 37-40.

Week 12 (Nov. 28 & 30): Quiz 9. Sections 41-42. Unit Four Vocabulary.

Week 13 (Dec. 5 & 7): Quiz 10. Sections 43-44.

Winter Break (No December Exam!)

Week 14 (Jan. 9 & 11): review. Unit Five Vocabulary. Sections 45-46.

Week 15 (Jan. 16 & 18): Quiz 11. Sections 47-49.

Week 16 (Jan. 23 & 25): Quiz 12. Sections 50-56. Unit Six Vocabulary.

Week 17 (Jan. 30 & Feb. 1): Quiz 13. Sections 57-61.

Week 18 (Feb. 6 & 8): Quiz 14. Sections 62-64. Unit 7 Vocabulary.

Week 19 (Feb. 13 & 15): Sections 65-66. **Test 2: February 15th**

Week 20 (February 19-23): Reading Week, no class

Week 21 (Feb. 27 & 29): Quiz 15. sections 67-71. Unit Eight Vocabulary.

Week 22 (Mar. 5 & 7): Quiz 16. Sections 72-81. Unit Nine Vocabulary.

Week 23 (Mar. 12 & 14): Quiz 17. Sections 82-86.

Week 24 (Mar. 19 & 21): Quiz 18. Sections 87-90. Unit Ten Vocabulary.

Week 25 (Mar. 26 & 28): Quiz 19. Sections 91-96.

Week 26 (Apr. 2 & 4): Quiz 20. Sections 97-98. Unit Eleven Vocabulary. Review.

Final Exam during Examination Period

N.B. This schedule is subject to revision if necessary

Course Policies

- Because we take them up together, homework assignments are due *in class*.
- You are encouraged to form study groups in order to prepare for tests or quizzes or to discuss homework, but the work you submit **must be your own**.
- If you miss a quiz or homework assignment due to illness or crisis, please let me know within 48 hours. Otherwise, missed quizzes or assignments will count towards your dropped tally.

Important University Policies

For work totaling 10% or more of the final course grade, you must provide valid medical or supporting documentation to the Academic Counselling Office of your Faculty of Registration as soon as possible. For further information, please consult the University's medical illness policy at Greek 1000, 2023-24

https://www.uwo.ca/univsec/pdf/academic_policies/appeals/academic_consideration.pdf

The Student Medical Certificate is available at

https://www.uwo.ca/univsec/pdf/academic_policies/appeals/medicalform.pdf.

Absences from Final Examinations

If you miss the Final Exam, please contact the Academic Counselling office of your Faculty of Registration as soon as you are able to do so. They will assess your eligibility to write the Special Examination (the name given by the University to a makeup Final Exam).

You may also be eligible to write the Special Exam if you are in a “Multiple Exam Situation” (e.g., more than 2 exams in 23-hour period, more than 3 exams in a 47-hour period).

Religious Accommodation

When a course requirement conflicts with a religious holiday that requires an absence from the University or prohibits certain activities, students should request accommodation for their absence in writing at least two weeks prior to the holiday to the course instructor and/or the Academic Counselling office of their Faculty of Registration. Please consult University's list of recognized religious holidays (updated annually) at

<https://multiculturalcalendar.com/ecal/index.php?s=c-univwo>.

Accommodation Policies

Students with disabilities are encouraged to contact Accessible Education, which provides recommendations for accommodation based on medical documentation or psychological and cognitive testing. The policy on Academic Accommodation for Students with Disabilities can be found at:

[https://www.uwo.ca/univsec/pdf/academic_policies/appeals/Academic Accommodation_disabilities.pdf](https://www.uwo.ca/univsec/pdf/academic_policies/appeals/Academic_Accommodation_disabilities.pdf).

Academic Policies

The website for Registrarial Services is <http://www.registrar.uwo.ca>.

In accordance with policy (https://www.uwo.ca/univsec/pdf/policies_procedures/section1/mapp113.pdf), the centrally administered e-mail account provided to students will be considered the individual's official university e-mail address. It is the responsibility of the account holder to ensure that e-mail received from the University at their official university address is attended to in a timely manner.

Academic Offences

Scholastic offences are taken seriously, and students are directed to read the appropriate policy, specifically, the definition of what constitutes a Scholastic Offence, at the following Web site:

http://www.uwo.ca/univsec/pdf/academic_policies/appeals/scholastic_discipline_undergrad.pdf.

Academic Counselling

Your Home Faculty's Academic Counselling or Academic Advising Office will support or refer whenever you have an issue that is affecting your studies, including information on adding/dropping courses, academic considerations for absences, appeals, exam conflicts, and many other academic related matters. Do not hesitate to reach out to them if you are struggling and unsure where to go for help. Contact info for all Faculties is here:

https://registrar.uwo.ca/faculty_academic_counselling.html

Mental Health Support

Students who are in emotional/mental distress should refer to Mental Health@Western (<https://uwo.ca/health/>) for a complete list of options about how to obtain help.

Gender-based and sexual violence

Western is committed to reducing incidents of gender-based and sexual violence and providing compassionate support to anyone who has gone through these traumatic events. If you have experienced sexual or gender-based violence (either recently or in the past), you will find information about support services for survivors, including emergency contacts at

https://www.uwo.ca/health/student_support/survivor_support/get-help.html.

To connect with a case manager or set up an appointment, please contact support@uwo.ca.

Accessible Education

Please contact the course instructor if you require lecture or printed material in an alternate format or if any other arrangements can make this course more accessible to you. You may also wish to contact Accessible Education at http://academicsupport.uwo.ca/accessible_education/index.html if you have any questions regarding accommodations.

Copyright

Lectures and course materials, including power point presentations, outlines, and similar materials, are protected by copyright. You may take notes and make copies of course materials for your own educational use. You may not record lectures, reproduce (or allow others to reproduce), post or distribute lecture notes, wiki material, and other course materials publicly and/or for commercial purposes without the instructor's written consent.